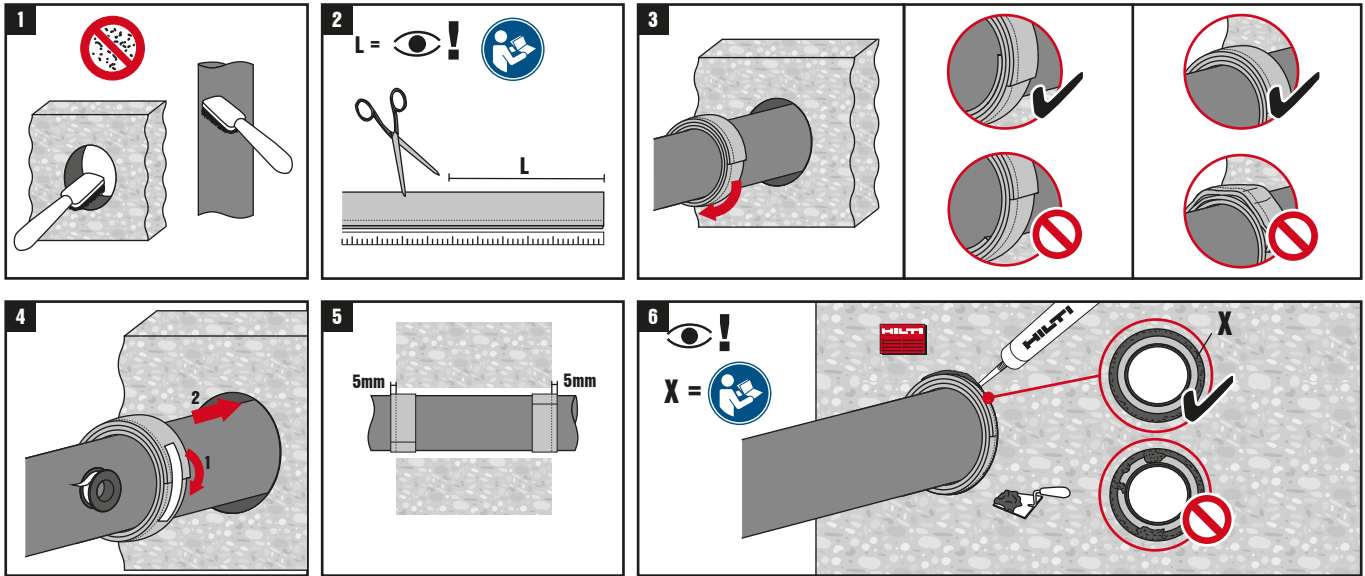


## RIGID/FLEXIBLE WALL APPLICATION

ETA 20/0989

 **QR**  
www.hilti.group  
EN: <http://fsselector.hilti.com>

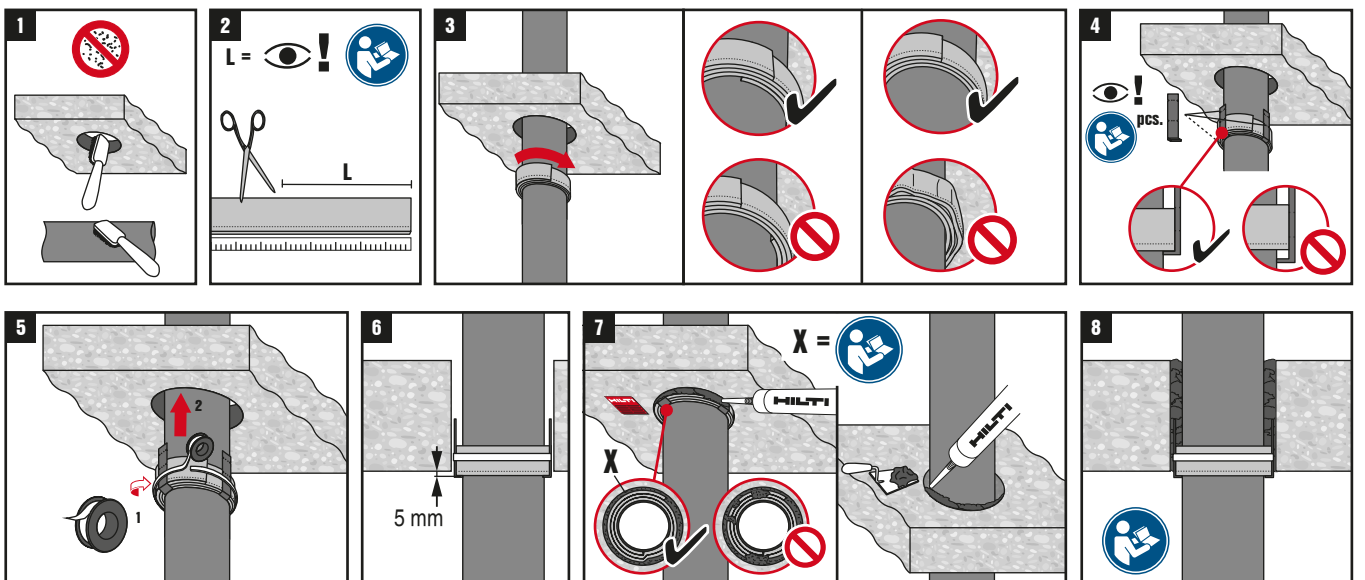


## RIGID FLOOR APPLICATION

ETA 20/0989

 **QR**  
www.hilti.group  
EN: <http://fsselector.hilti.com>

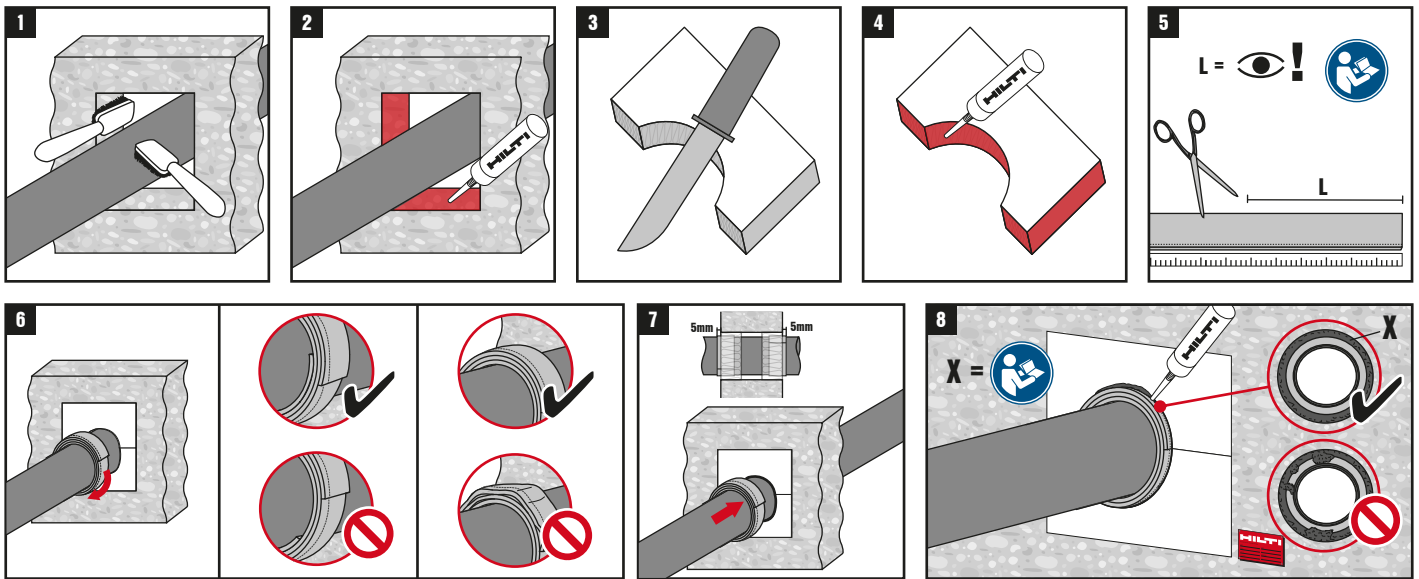
 



# WALL APPLICATION IN COATED BOARD

ETA 11/0429

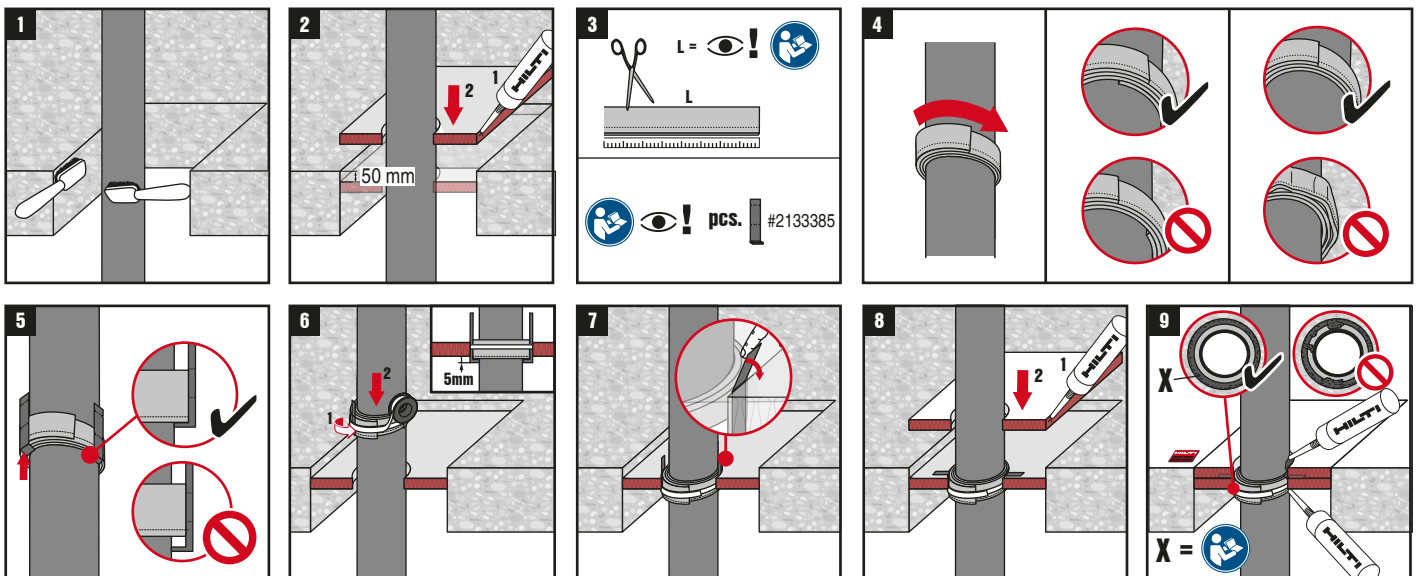
<p>www.hilti.group EN: <a href="http://fsselector.hilti.com">http://fsselector.hilti.com</a></p>	
--	--

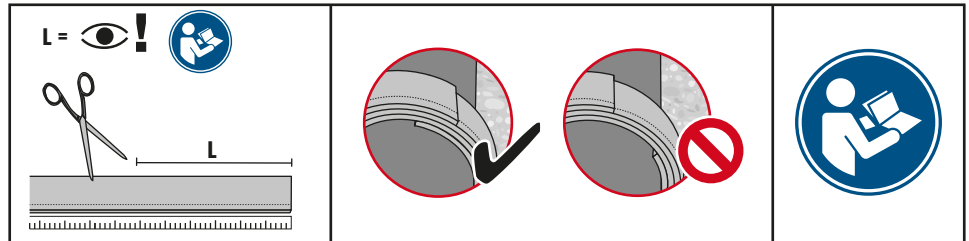


# FLOOR APPLICATION IN COATED BOARD

ETA 11/0429

<p>www.hilti.group EN: <a href="http://fsselector.hilti.com">http://fsselector.hilti.com</a></p>	
--	--





Layers Lagen				
	Ø (mm)	- L (mm)	4 mm L (mm)	9 mm L (mm)
2	32	≥ 250	≥ 300	≥ 360
	40	≥ 300	≥ 360	≥ 410
	50	≥ 370	≥ 420	≥ 470
	56	≥ 410	≥ 460	≥ 520
3	63	≥ 690	≥ 770	≥ 820
	75	≥ 810	≥ 880	≥ 950
4	82	≥ 1200	≥ 1300	≥ 1400
	90	≥ 1300	≥ 1400	≥ 1500
	110	≥ 1530	≥ 1650	≥ 1750
	125	≥ 1730	≥ 1830	≥ 1960
6	135	≥ 2850	≥ 3000	≥ 3150
	140	≥ 2960	≥ 3120	≥ 3300
	160	≥ 3330	≥ 3520	≥ 3650



Layers Lagen					
	Ø (mm)	AF1 L (mm)	AF2 L (mm)	AF3 L (mm)	AF4 L (mm)
2	32	≥ 400	≥ 420	≥ 460	≥ 500
	40	≥ 420	≥ 470	≥ 530	≥ 580
	50	≥ 490	≥ 540	≥ 590	≥ 640
	56	≥ 520	≥ 590	≥ 620	≥ 690
4	63	≥ 1180	≥ 1290	≥ 1370	≥ 1500
	75	≥ 1390	≥ 1500	≥ 1600	≥ 1720
5	90	≥ 1940	≥ 2110	≥ 2210	≥ 2360
	110	≥ 2290	≥ 2570	≥ 2570	≥ 2730



≤ 75 mm	2	2	-	-	-
> 75 mm	3	3	-	-	-